

GARDENING FOR BEES, BIRDS AND BUTTERFLIES



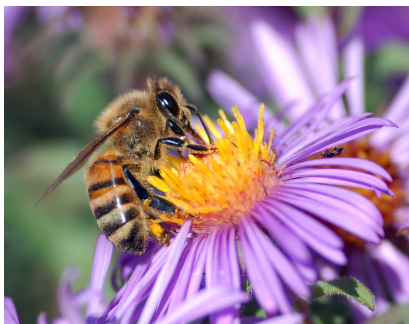
SHOREWOOD
WATERS PROJECT

Creating a landscape that bees, birds and butterflies would be happy to call home contains these elements – clean water, shelter and food. Gardens for these flying beauties are fun to design and grow and create a beautiful changing landscape of motion, fragrance and color all season long. They also attract a huge variety of pollinators to help our flowers, fruits and veggies thrive, which are also food for the birds and wildlife.

The Basics: The shelter of layers of shrubs, trees, evergreens, grasses and plants provide homes for and protect bees, birds and butterflies from predators. Native plants work best to provide shelter, pollen and food and are easier to grow as they are well adapted to our climate and soils. Bees and butterflies enjoy colorful flowers in full sun that bloom at different times throughout the season. All wildlife and insects prefer thriving native plants that are grown in well-drained soil. Adding compost to your garden each year will help break-up clay and add nutrients which are the keys to healthy plants that won't need fertilizer or pesticides which can be life-threatening to insects and wildlife. Add a source of fresh water in a shallow container, bird bath or fountain. Birds love to take baths and butterflies and bees especially like shallow mud puddles for water and minerals and rocks to warm themselves on. Below is specific information for these flying beauties:

Bees: Without bees many of our fruits and veggies would never grow, many flowers would never bloom and there would be no honey. They're so very important to many aspects of our life. Many plants produce pollen for bees, but honeybees still need nectar for honey production. Bees are attracted to yellow, white, blue and purple flowers and they love flowers of herbs, fruit and veggies like blackberries, cantaloupe, cucumbers, gourds, peppers, pumpkins, squash and watermelon.

Birds: In addition to eating food in bird feeders year-round, birds like seeds and berries from junipers, shrubs and trees. In spring, hummingbirds arrive and need high-energy food to support their high-energy activities. Adding a hummingbird feeder will make them happy and provide higher concentrated food. They love red, orange or pink flowers and may visit hundreds of flowers each day for feeding. Mid-April to early May, is a great time to attract migrating birds such as Baltimore Orioles (they love sections of orange and jam), and Scarlet Tanagers and Indigo Buntings love water features and suet cakes. Robins eat worms and berries and other fruit. Cardinals love safflower and sunflower seeds, crushed peanuts, cracked corn and berries. Many birds also eat the seeds from little and big bluestem native grasses.



Butterflies: These colorful beauties need plants to lay their eggs on (host plants), that can then be used as food for the caterpillars that emerge. Each type of butterfly has specific host plant. The caterpillars will leave holes in your plants, so also place some of these plants in areas out of sight if this is a bother. Adult butterflies need different nectar plants for food and are attracted to purple, red, orange and yellow flowers. Always locate gardens for bees and butterflies in full sun where they can keep warm and are sheltered from winds.

WHAT TO GROW

The list of plants below is a good start to provide bees, birds and butterflies with food, nectar and a happy home. Host plants for caterpillars are underlined.

Annuals & Herbs: Ageratum, Cigar Plant (*Cuphea ignea*), Coriander (*Coriandrum*), Cosmos (*Cosmos sulphureus*), Dill (*Antheum graveolens*), Fuchsia, Fennel (*Foeniculum vulgare*), Globe amaranth (*Gomphrena globosa*), Heliotrope (*Heliotropium*), Lantana (*Lantana camara*, L. species), Lavender (*Lavendula*), Licorice Vine (*Helichrysum*), Mexican Marigold (*Tagetes patula*), Mexican Heather (*Cuphea hyssopifolia*), Mexican Sunflower (*Tithonia spp.*), Mint (*Mentha*), Nasturtium (*Tropaeolum majus*), Nicotiana, Pansies (*Viola tricolor var. hortensis*), Parsley (*Petroselinum crispum*), Pentas, Petunias, Snapdragons (*Antirrhinum majus*), Sunflower (*Helianthus spp.*), Thyme (*Thymus spp.*), Verbena (*Verbena spp.*) and Zinnia (*Zinnia spp.*)

Bulbs: Alliums, Crocus, Grape Hyacinth (*Hyacinthus*), Iris and Lilies (*Lilium*)

Grasses: Native grasses like Big Bluestem (*Andropogon gerardii*), Little Bluestem (*Schizachyrium scoparium*), Purple Love Grass (*Eragrostis pectinacea*) or Prairie Dropseed (*Sporobolus heterolepis*) are great, but really any grass is a good shelter, especially in winter. Don't cut down the grass in fall. Grasses add a nice structure to your winter garden and are great for shelter. Cut them in late winter (February or March) before they begin to grow.

Perennials: Anise Hyssop (*Agastache foeniculum*), Aster (*Symphotrichum novae-angliae*), Bee-balm (*Monarda didyma*), Black-eyed Susan (*Rudbeckia hirta*), Catmint (*Nepeta spp.*), Chives (*Allium schoenoprasum*), Columbine (*Aquilegia spp.*), Coneflower, Purple (*Echinacea purpurea*), Coreopsis (*Coreopsis spp.*), Culvers Root (*Veronicastrum virginicum*), Daylily (*Hemerocallis spp.*), False Indigo (*Baptisia australis*), Gayfeather (*Liatris spp.*), Goldenrod (*Solidago spp.*), Hibiscus (*Hibiscus spp.*), Hollyhock (*Althaea rosea*), Joe-pye Weed (*Eupatorium fistulosum*), Lobelia (*Lobelia cardinalis*), Mallow (*Malva*), Mexican Sage (*Salvia leucanthemum*), Milkweed and Butterfly Weed (*Asclepias incarnate and tuberosa*), Phlox (*Phlox paniculata*), Salvia (*Salvia spp.*), Sedum (*Sedum ternatum*), Shasta Daisy (*Leucanthemum superbum*), Virginia Bluebells (*Mertensia*), Violet (*Viola spp.*) and Yarrow (*Achillea spp.*)

Shrubs: Butterfly Bush (*Buddleia davidii*), Chokeberry (*Aronia spp.*), Dogwood (*Cornus spp.*), Elderberry (*Sambucus spp.*), Juniper (*Juniperus*), Lilac (*Syringe spp.*), Roses (*Rosa spp.*), Rose of Sharon (*hibiscus syriacus*), Serviceberry (*Amelanchier spp.*), Weigela (*Weigela spp.*), Witch-hazel (*Hamamelis spp.*), Viburnum – Arrowwood and Korean Spice (*Viburnum dentatum and carlesii*)

Trees: American Linden (*Tilia americana*), River or Paper Birch (*Betula nigra and papyrifera*), Crabapple (*Malus spp.*), Eastern Redbud (*Cercis canadensis*), Hawthorn (*Crataegus spp.*), Common Hackberry (*Celtis occidentalis*), Swamp White Oak (*Quercus bicolor*), and Black or White Spruce (*Picea mariana or glauca*), Willow (*Salix spp.*)

Vines: Clematis, Honeysuckle Vine (*Lonicera semervines*), Pipe Vine (*Aristolochia macrophyllia*), Scarlet Runner Bean (*Phaseolus coccineus*, an annual that's edible) and Trumpet Vine (*Campsis spp.*)

Information for this flyer was obtained from a variety of sources, including the University of Illinois and Wisconsin Extensions, Bird City USA and "Beyond the Bird Feeder: Creating a Bird Friendly Yard", by Mariette Nowak.