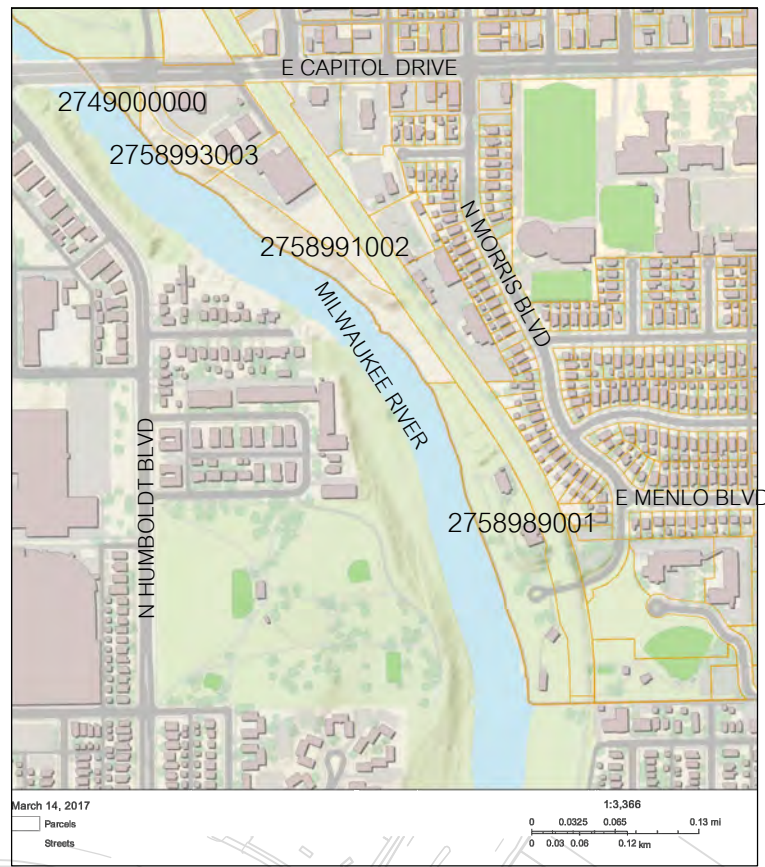


DRAFT - IN PROGRESS



TOTAL PROJECT AREA: 11.5 ACRES

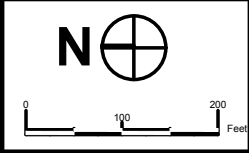
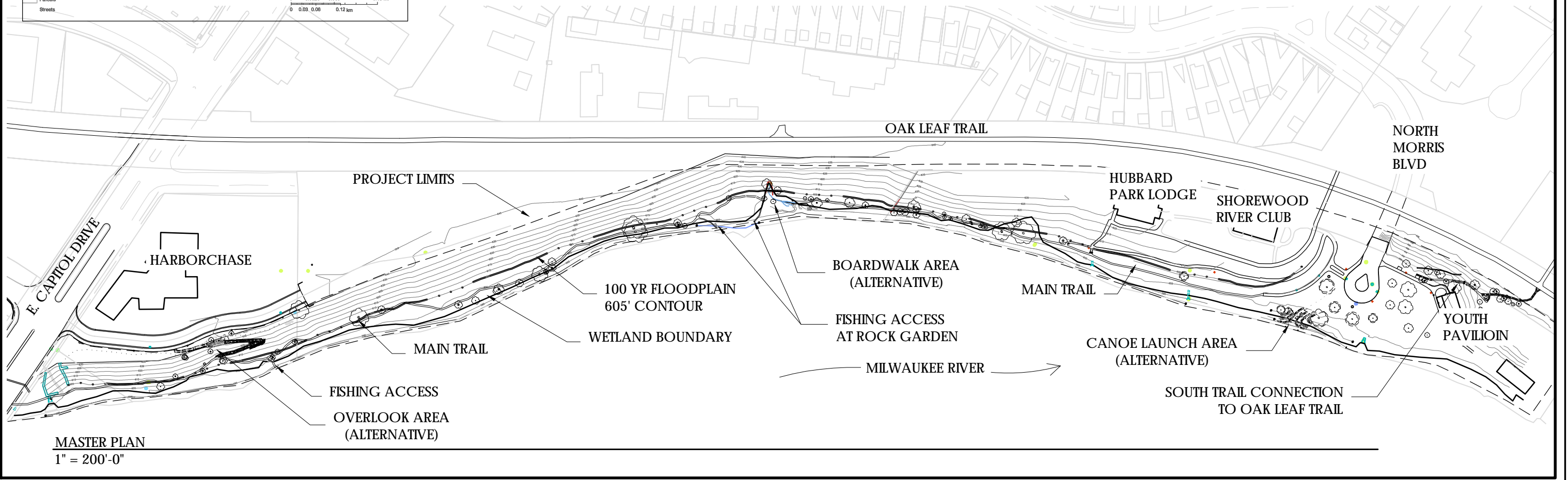
PROJECT ELEVATION RANGE:
NORTH END 595'-632'
SOUTH END 590'-635'

OHWM:
NORTH END 595' ELEVATION
SOUTH END 592' ELEVATION

FEMA 100 YR FLOODLINE: 605'

Marek Landscaping, LLC
414-272-0242
125 W. Melvina St
Milwaukee, WI 53212
mareklandscaping.com

Mike Marek - Principal/Project Manager
mike@mareklandscaping.com
James Mitschrich - Design Director
jim@mareklandscaping.com
Danielle Bell - Landscape Designer
danielle@mareklandscaping.com



Shorewood P-3 River District Riparian Trail

Village of Shorewood

General Project Data		
Description: Land Use Permit		
Page Number: 1 of 2	Sheet Number: GP-01	Date: 3-16-17

